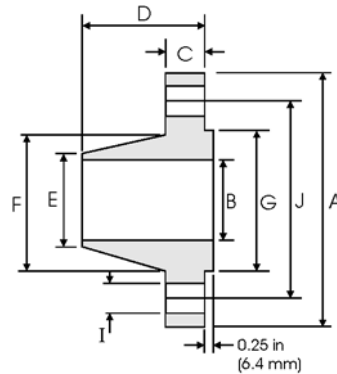


Weld Neck Flanges - ANSI B16.5



Class 400 lb

Nominal Pipe Size	Pipe		Flange Data				Hub Data		Raised Face	Drilling Data			Weight
			A	B	C	D	E	F	G	H	I	J	
	Outside Diameter	Overall Diameter	Inside Diameter	Flange Thickness min	Overall Length	Diameter at Weld Bevel	Hub Diameter	Face Diameter	Number of Holes	Bolt Hole Diameter	Diameter of Circle of Holes	kg/ piece	
1/2	0.840	3.750	To be specified by Purchaser	0.560	2.060	0.840	1.500	1.380	4	0.620	2.620	0.87	
	21.30	95.30		14.20	52.30	21.30	38.10	35.00		15.70	66.55		
3/4	1.050	4.620		0.620	2.250	1.050	1.880	1.690	4	0.750	3.250	1.45	
	26.70	117.3		15.70	57.15	26.70	47.80	42.90		19.10	82.60		
1	1.315	4.880		0.690	2.440	1.320	2.120	2.000	4	0.750	3.500	1.76	
	33.40	124.0		17.50	62.00	33.50	53.80	50.80		19.10	88.90		
1 1/4	1.660	5.250		0.810	2.620	1.660	2.500	2.500	4	0.750	3.880	2.49	
	42.20	133.4		20.60	66.55	42.20	63.50	63.50		19.10	98.60		
1 1/2	1.900	6.120		0.880	2.750	1.900	2.750	2.880	4	0.880	4.500	3.49	
	48.30	155.4		22.40	69.85	48.30	69.85	73.15		22.40	114.3		
2	2.375	6.500		1.000	2.880	2.380	3.310	3.620	8	0.750	5.000	4.36	
	60.30	165.1		25.40	73.15	60.45	84.10	91.90		19.10	127.0		
2 1/2	2.875	7.500		1.120	3.120	2.880	3.940	4.120	8	0.880	5.880	6.43	
	73.00	190.5		28.40	79.25	73.15	100.1	104.6		22.40	149.4		
3	3.500	8.250		1.250	3.250	3.500	4.620	5.000	8	0.880	6.620	8.53	
	88.90	209.6		31.75	82.60	88.90	117.3	127.0		22.40	168.1		
3 1/2	4.000	9.000		1.380	3.380	4.000	5.250	5.500	8	1.000	7.250	10.7	
	101.6	228.6		35.10	85.90	101.6	133.4	139.7		25.40	184.2		
4	4.500	10.00		1.380	3.500	4.500	5.750	6.190	8	1.000	7.880	12.8	
	114.3	254.0		35.10	88.90	114.3	146.1	157.2		25.40	200.2		
5	5.563	11.00	1.500	4.000	5.560	7.000	7.310	8	1.000	9.250	16.9		
	141.3	279.4	38.10	101.6	141.2	177.8	185.7		25.40	235.0			
6	6.625	12.50	1.620	4.060	6.630	8.120	8.500	12	1.000	10.62	22.0		
	168.3	317.5	41.10	103.1	168.4	206.2	215.9		25.40	269.7			
8	8.625	15.00	1.880	4.620	8.630	10.25	10.62	12	1.120	13.00	34.7		
	219.1	381.0	47.80	117.3	219.2	260.4	269.7		28.40	330.2			
10	10.75	17.50	2.120	4.880	10.75	12.62	12.75	16	1.250	15.25	48.5		
	273.0	444.5	53.80	124.0	273.0	320.5	323.8		31.75	387.4			
12	12.75	20.50	2.250	5.380	12.75	14.75	15.00	16	1.380	17.75	69.6		
	323.8	520.7	57.15	136.7	323.8	374.7	381.0		35.10	450.9			
14	14.00	23.00	2.380	5.880	14.00	16.75	16.25	20	1.380	20.25	95.5		
	355.6	584.2	60.45	149.4	355.6	425.5	412.7		35.10	514.4			
16	16.00	25.50	2.500	6.000	16.00	19.00	18.50	20	1.500	22.50	118		
	406.4	647.7	63.50	152.4	406.4	482.6	469.9		38.10	571.5			
18	18.00	28.00	2.620	6.500	18.00	21.00	21.00	24	1.500	24.75	145		
	457.2	711.2	66.55	165.1	457.2	533.4	533.4		38.10	628.7			
20	20.00	30.50	2.750	6.620	20.00	23.12	23.00	24	1.620	27.00	173		
	508.0	774.7	69.85	168.1	508.0	587.2	584.2		41.10	685.8			
24	24.00	36.00	3.000	6.880	24.00	27.62	27.25	24	1.880	32.00	249		
	609.6	914.4	76.20	174.8	609.6	701.5	692.1		47.80	812.8			

Notes

- Dimension B corresponds to the pipe inside diameter. Values quoted assume 40S/Standard wall thickness.
- Weights are based on manufacturer's data and are approximate.
- For ring joint facings see page 8-6. For weld end bevel see page 8-5.
- For tolerances see page 8-4.